

# alor



GEM WALL LIGHT

[HTTP://ALOR.STUDIO](http://alor.studio)

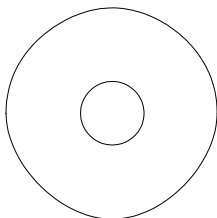
DESIGN©ALOR.STUDIO

# GEM WALL LIGHT

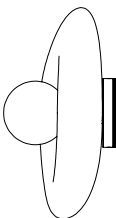
Designed in Melbourne

Crafted to emulate the captivatingly irregular shapes found in pebbles, rocks and gemstones, the Gem Wall Light showcases an organic and asymmetrical design.

Moulded in solid glass, its fluid form accentuates the play of light as it refracts and dances within the contours of the fixture



200



105

Material	Glass, Anodised Aluminium
Voltage	210 - 240V
LED	G9
Globe	60mm Frosted
Mounting	Ø 65mm Wall Plate
IP Rating	IP45
Weight	3.5Kg
Finishes	Glass: Clear & Frosted
	Aluminium: White
	Custom Available
Trade Price	\$475 GST inc
Lead Time	2-4 Weeks
Designer	James Walsh
Year of Design	2024



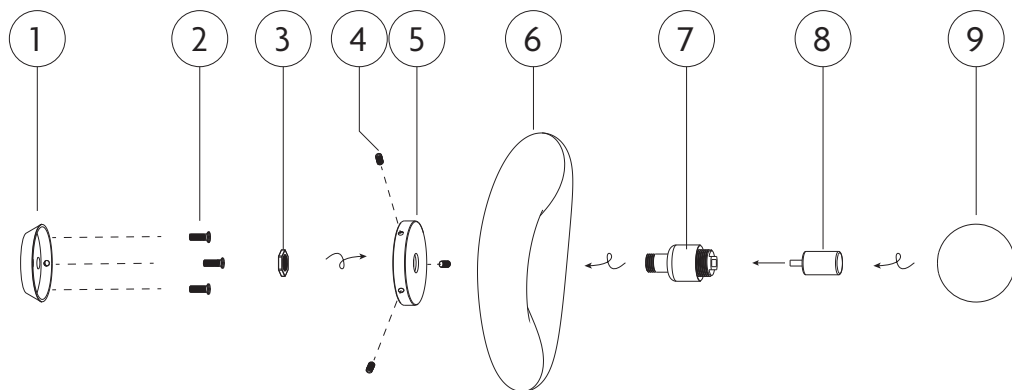
## GEM WALL LIGHT

### ASSEMBLY INSTRUCTIONS

1. Backing Plate
2. 3x Screws
3. M10 nut

4. 3x Grub screws
5. Wall mount Cover
6. Glass shade

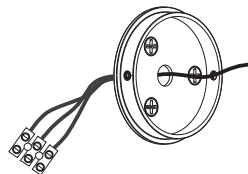
- Lamp holder
- LED Globe
- Frosted light cover



**IMPORTANT:** Turn off the power before starting the installation.

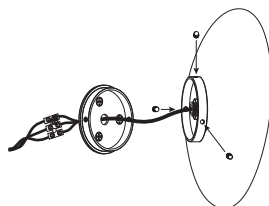
#### Step 1: Prepare the Wall Mount

1. Position the backing plate on the wall and mark the center point.
2. Remove the backing plate, drill a central hole (minimum 15mm) large enough to pass the terminals through.
3. Detach the terminals from the light's cables, feed the cables through the backing plate, and reattach the terminals.



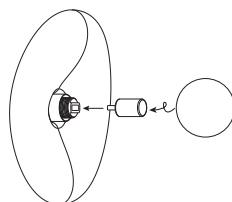
#### Step 2: Wire the Connections

1. A licensed electrician must complete the electrical termination.
2. Connect the active, neutral, and earth cables to the mains wiring, ensuring proper insulation and safely push terminals into the wall cavity.
3. Secure the wall light backing plate to the wall using the supplied screws and plugs.
4. Position the glass and wall mount cover over the backing plate, securing them with the three supplied grub screws.



#### Step 3: Install the Globe and Shade

1. Insert the provided G9 globe into the lamp holder.
2. Screw the frosted glass shade into place.



**Final Step: Test the Light**

Restore power.

Test the light to ensure it functions correctly.

**alor**